



STG meets ISO9001 Certificate
STG Self Closing Safety Gate Equipment meets CE Certificate Three pieces Patent certificate

B-P Self-Closing Safety Gate (SCSG)

B-P 系列自闭式安全门



Yancheng STG Safety Equipment Co.,Ltd

盐城市斯壮格安全设备有限公司



STG meets ISO9001 Certificate
STG Self Closing Safety Gate Equipment meets CE Certificate Three pieces Patent certificate

目 录

B-P Series Self Closing Safety Gate	3
1. Design Qualification 设计条件:	3
2. Product Descriptions 产品说明:	4
3. Technical standards of Self closing safety gate 自闭式安全门技术标准:.....	5
4. Product Characteristics 性能特点:	5
5. Products Code System 产品编码系统:	6
6. Installation Accessories 现场安装配件:	7
7. Installation the shape 安装形状:	7
8. Installation Instructions 安装说明:	8
9. Operating Instructions 使用说明:	9
10. Product Picture 产品图片 (FYI)	9
11. Installation Picture 现场安装照片	10
12. The size of SCSG B-P series B-P 系列自闭式安全门产品尺寸	11
B-P-L 系列自闭式安全门产品尺寸.....	11
B-P-UL 系列自闭式安全门产品尺寸.....	13
13. Patent, CE and ISO Certificate 专利证书、CE 证书和 ISO 证书.....	14
14. Reference Document 参考文件	15
14.1. ISO_14122-3_2016 Safety of machinery — Permanent means of access to machinery	15
14.2. ISO_14122-4_2016 Safety of machinery — Permanent means of access to machinery	16
GB 17888.3-2008 机械安全 进入机械的固定设施 第 3 部分: 楼梯、阶梯和护栏	16
GB 17888.4-2008 机械安全 进入机械的固定设施第 4 部分: 固定式直梯	16
15. 联系信息.....	17



STG meets ISO9001 Certificate
STG Self Closing Safety Gate Equipment meets CE Certificate Three pieces Patent certificate

B-P Series Self Closing Safety Gate

B-P 系列自闭式安全门

产品编号 Product No. P/N B-P-L/UL-CS/SS-CT/QT-XX-L/R-T/0

Tag No.: SCSG-1001~

Total: Sets

Remark 备注:

- Check the Self Closing Safety Gate Coding System before selecting accessories. 在选择自闭式安全门之前, 请查看自闭式安全门的编码系统来决定自闭式安全门的配置。
- X: 安全门在安装柱内侧
- 调节宽度: 有限: L (框架由左右 2 个框架组成, 调节宽度是有限的), 无级: UL (框架由左右 2 个框架组成, 调节宽度是无级的)
- 框架材料: 不锈钢 SS、碳钢 CS
- 框架结构: 圆管 CT、方管 QT
- 左边安装: L, 右边安装: R
- 特殊规格: T, 无特殊: 0
- B 系列自闭式安全门的分类

序号	产品型号	安全门与安装柱的关系		安全门调节宽度		是否分左右安装
		平行: P	内侧: X	有限: L	无级: UL	
1	B-P-L-	<input checked="" type="checkbox"/>		<input checked="" type="checkbox"/>		是
2	B-P-UL-	<input checked="" type="checkbox"/>			<input checked="" type="checkbox"/>	是
3	B-X-L-		<input checked="" type="checkbox"/>			无
4	B-X-UL-		<input checked="" type="checkbox"/>			无

特别提醒 Remark: This product appearance has applied for patents and utility model patents 该产品已经申请外观专利和实用新型专利

1. Design Qualification 设计条件:

B-P-L series Longitudinal direction impact B-P-L 系列纵向冲击力	>10.0KN	B-P-UL series Longitudinal direction impact B-P-UL 系列纵向冲击力	>6.0 KN
B-P-L series Horizontal direction impact B-P-L 系列横向冲撞力	>5.0KN	B-P-UL series Horizontal direction impact B-P-UL 系列横向冲撞力	>3.0 KN
B-P-L series Longitudinal direction Load B-P-L 系列纵向静载荷	>200.0KG	B-P-UL series Longitudinal direction Load B-P-UL 系列纵向静载荷	>100.0KG
B-P-L series Horizontal direction	>100.0KG	B-P-UL series Horizontal direction	>60.0KG



STG meets ISO9001 Certificate

STG Self Closing Safety Gate Equipment meets CE Certificate Three pieces Patent certificate

Load B-P-L 系列横向静载荷		Load B-P-UL 系列横向静载荷	
Design temperature 设计温度	-50~65℃	Main tube 主管尺寸	∅ 38 mm
Using temperature 使用环境温度	-50~65℃	Deputy tube 副管尺寸	∅ 32mm

- 1.1. Can fixed circular tube, Square tube, Angle iron or steel flat 可以固定在圆管、方管、角钢或者扁钢上面
- 1.2. Self-closing safety gate by turn angle, Not by spring mechanism 依靠转动角度进行自动关闭安全门，没有任何弹簧机构
- 1.3. For the site unable to determine the specific size, it is recommended to select UL series of self closing safety door (because UL represents the width of self closing safety door is stepless adjustment, the customer can reduce the length of the right frame of self closing safety door according to the specific size on site). 对于现场无法确定具体尺寸的，建议选择 UL 分系列的自闭式安全门（因为 UL 代表自闭式安全门的宽度是无级调节的，客户在现场可以根据具体尺寸把自闭式安全门右侧框架的长度减少）。
- 1.4. For UL sub series self closing safety door with stepless width adjustment, there is no safety sign. Size of frame pipe: ∅ 32mm 对于宽度可以是无级调节的 UL 分系列自闭式安全门，是没有安全标识贴。框架管的尺寸：∅ 32mm
- 1.5. For special types of self closing safety doors, field measurement is required 对于特殊类别的自闭式安全门，需要现场测量尺寸
- 1.6. For B-P-L series self closing safety door, the installation width is less than 500mm, and the width dimension is fixed 对于 B-P-L 系列自闭式安全门的安装宽度小于 500mm，其宽度尺寸为固定的。

2. Product Descriptions 产品说明:

The self-closing safety gate belongs to safety protection product. When the personnel enters the platform through stairs or vertical ladders, or enter another platform from one platform, the safety protection measures are set due to the risk of falling due to the unstable standing of the personnel. The self-closing safety gate is equivalent to the movable structure at the opening of platform guardrail 自闭式安全门属于安全防护产品，当现场人员通过楼梯或者直梯进入平台，或者从一个平台进入另外一个平台的时候，由于人员站立不稳定而存在跌落风险而设置的安全保护措施，自闭式安全门相当于平台护栏开口处的活动结构

Basic characteristics 基本特性:

1. Self closing: The gate closes automatically by elastic force or gravity 自动关闭：门通过弹力或者重力来实现自动关闭
2. Unidirectionality: can only be opened to the inside of the platform 单向性：只能向平台内侧打开
3. Remain in closed position but not locked 保持在关闭位置但不锁定
4. Designed to open easily on a platform or floor 设计成在平台或地板上容易打开
5. Secure when closing to prevent the user from pushing away and falling from the opening 关闭时牢固固定，以防止使用者推开并从开口处坠落



STG meets ISO9001 Certificate
STG Self Closing Safety Gate Equipment meets CE Certificate Three pieces Patent certificate

3. Technical standards of Self closing safety gate 自闭式安全门技术标准:

- ISO_14122-3_2016 Safety of machinery-Permanent means of access to machinery-Part 3, Stairs, stepladders and guard-rails
- ISO_14122-4_2016 Safety of machinery-Permanent means of access to machinery-Part 4, Fixed ladders
- GB17888.3-2008 机械安全 进入机械的固定设施_第3部分: 楼梯、阶梯和护栏
- GB17888.4-2008 机械安全进入机械的固定设施_第4部分: 固定式直梯
- GB4053.3-2009 固定式钢梯及平台安全要求_第3部分: 工业防护栏杆及钢平台

4. Product Characteristics 性能特点:

- 4.1. Gate automatically closes due to gravity 自闭式安全门由于重力实现自动关闭
- 4.2. Rises when opened; Returns closed when released 打开时上升;返回关闭时释放
- 4.3. Design does not depend on springs, cams, bearings, or the operator 设计不依赖于弹簧、凸轮、轴承或者使用者的力量, 避免弹簧在现场容易生锈或者弹力消失而影响设备使用
- 4.4. Gate has a horizontal swing, not a vertical drop 门有一个横向摆动,而不是垂直下降
- 4.5. The parallel between P series self-closing safety gate and stand column, avoid the influence due to the fixed part to loosen from the use of closed door, and the stress distribution is greater than the X series self-closing door installed in the middle of the pillar position P 系列自闭式安全门与安装立柱平行, 避免了由于固定部分出现松动而影响自闭式安全门的使用, 而且受力情况优越于把 X 系列自闭式安全门安装在立柱中间位置
- 4.6. The width of self-closing safety gate can be adjusted 自闭式安全门的宽度可以调节
- 4.7. Body material 主体材料: Carbon steel 碳钢
- 4.8. The rotating part material is stainless steel SS304, which is superior to carbon steel material 转动部分材料为不锈钢 SS304, 其性能优越于碳钢材料
- 4.9. The casing of the rotating part is a double-layer structure, which greatly extends the life of the self-closed safety gate 转动部分的套管为双层结构, 大大地延长了自闭式安全门的寿命
- 4.10. Unit turn angle: $90^{\circ} \leq \alpha \leq 140^{\circ}$ 安全门转动角度: $90^{\circ} \leq \alpha \leq 140^{\circ}$
- 4.11. Can installation left or right 可以安装在左侧或者右侧
- 4.12. The horizontal bar on the self-closed safety gate has the same height as the guardrail 自闭式安全门上横杆与护栏具有同样的高度
- 4.13. The distance of Bottom rail of unit is not over 500mm 自闭式安全门底部横杆距离地面不得大于 500mm
- 4.14. The space between of unit rail not over 500mm 自闭式安全门横杆间距之间不得大于 500mm
- 4.15. Can installation left or right 可以安装在左侧或者右侧
- 4.16. Color 颜色: Yellow 黄色
- 4.17. Electrical conductivity: Metal material, Electrical conduction 导电性: 材质为金属材质, 导电
- 4.18. Magnetism: Ferromagnetic 磁性: 具有铁磁性
- 4.19. The environment temperature: $-50^{\circ}\text{C} \sim 65^{\circ}\text{C}$ 适应环境温度: $-50^{\circ}\text{C} \sim 65^{\circ}\text{C}$



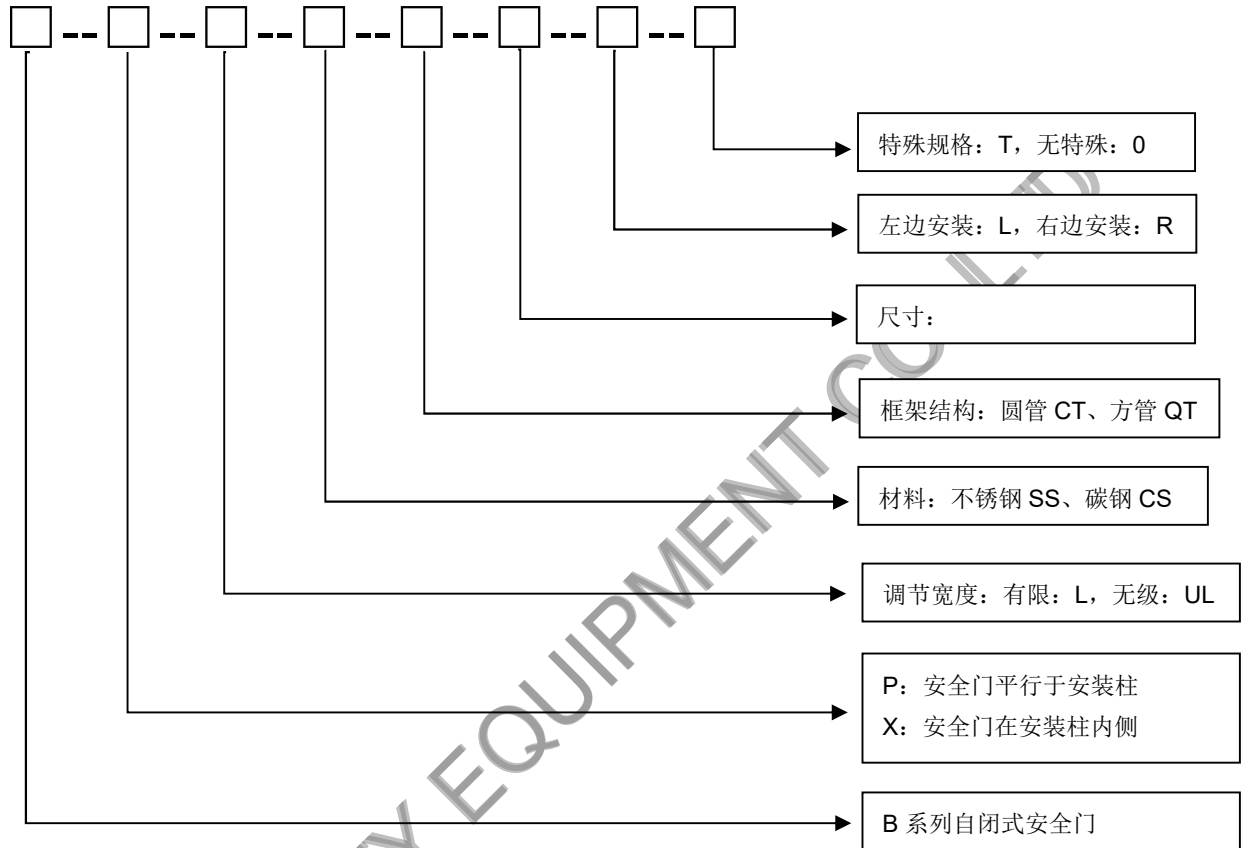
STG meets ISO9001 Certificate

STG Self Closing Safety Gate Equipment meets CE Certificate Three pieces Patent certificate

4.20. Allow rotation frequency 允许旋转次数: ≥ 100 万次

4.21. Product parts fit tolerance: clearance fit 产品零件配合公差: 间隙配合

5. Products Code System 产品编码系统:



For example 比如:


Type 型号 B-P-L-CS-CT-26-L-0		Type 型号 B-X-UL-SS-QT-00-R-T	
B: B 系列自闭式安全门 B Series Self Closing Safety Gate			
P:	安全门平行于安装柱 Parallel to the mounting column	X	安全门在安装柱内侧 Inside the mounting column
L:	代表自闭式安全门的宽度是有限调节	UL	代表自闭式安全门的宽度是无级调节
CS:	Material 材料:碳钢 CS	SS:	Material 材料:不锈钢 SS
CT:	Frame structure 框架结构: CT 是圆管 Circular tube	QT	Frame structure 框架结构: QT 是方管 Square tube
26	Size 尺寸: 26 英寸	00	Size 尺寸: UL 是无级调节, 用 00 来替代
L:	Installation location 安装方位: 左侧 Left	R	Installation location 安装方位: 右侧 Right
0	Special requirement 特殊规格: 无	T	Special requirement 特殊规格: 有



STG meets ISO9001 Certificate

STG Self Closing Safety Gate Equipment meets CE Certificate Three pieces Patent certificate


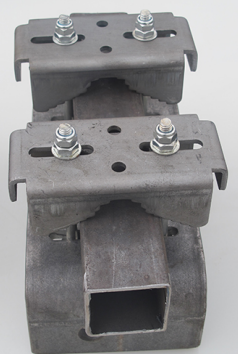
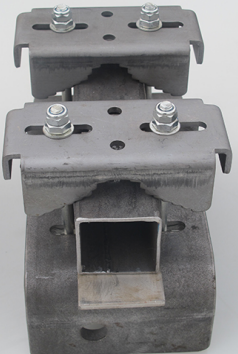
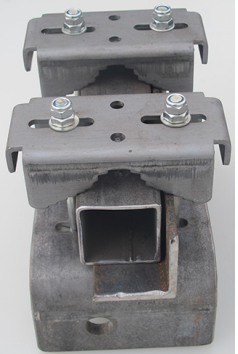
6. Installation Accessories 现场安装配件:

	
<p>M8 扳手 用于旋紧安装螺栓，配置比例：10%</p>	<p>M10 内六角扳手 用于调节自闭式安全门的宽度，配置比例：10%</p>
	
<p>安装螺栓套件 4 只螺栓、8 只垫片、4 只橡胶保护帽、4 只普通螺帽、4 只锁紧螺帽</p>	<p>锯齿形安装块 2 只，用于固定自闭式安全门在立柱上面</p>

Installation tools 安装工具

序号	安装配件	规格	数量 (只)	作用
1	锯齿形安装块		2	把自闭式安全门固定在安装柱上面
2	M8 安装螺栓	M8	4	把自闭式安全门固定在安装柱上面
3	M8 安装扳手	M8	2	用于旋紧安装螺栓，配置比例：10%
4	M10 内六角扳手	M10	1	调节自闭式安全门的宽度
5	卷尺		1	测量自闭式安全门的安装高度 (不配置)

7. Installation the shape 安装形状:

			
<p>圆管</p>	<p>方管</p>	<p>扁钢</p>	<p>角铁</p>



STG meets ISO9001 Certificate

STG Self Closing Safety Gate Equipment meets CE Certificate Three pieces Patent certificate

8. Installation Instructions 安装说明:

8.1. Technical Instructions 安装技术说明:

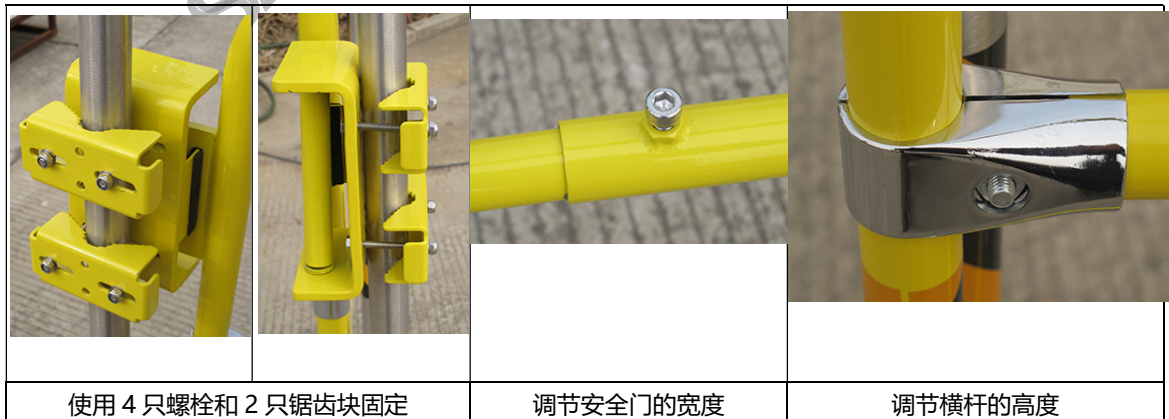
1. 安装柱形状和尺寸范围: <ul style="list-style-type: none"> ➤ 圆管: $\phi 25\sim 60\text{mm}$ ➤ 方管: $\text{SQ}25\sim 60\text{mm}$ ➤ 扁铁: 宽度 $25\sim 60\text{mm}$ ➤ 角铁: $25*25\sim 60*60\text{mm}$ 	2. 安装要求: <ul style="list-style-type: none"> ➤ 上横杆与护栏具有同样的高度 ➤ 下横杆距离地面或者平台不得大于 500mm ➤ 横杆之间间距不得大于 500mm
-----------------------------------------------------------------------------------------------------------------------------------------------------------------------------------------------------------------------------------------------------------------------------------	----------------------------------------------------------------------------------------------------------------------------------------------------------------------------------------

8.2. Installation steps 安装步骤:

- Remove the packing, then take out self closing safety gate 拆卸包装, 取出安全门
- Remove serrated mounting block (1 piece) and mounting bolt (4 pieces) 取出锯齿形安装块 (2 只) 和安装螺栓 (4 只)
- personnel enter the direction is from the front of closed door 人员进入方向是自闭式安全门的正面
- open width is measured with a tape measure, according to the measured data to determine the self-closing door model and a number 用卷尺测量敞口宽度, 根据测量数据确定自闭式安全门型号和位号
- Fixed the serrated mounting block and self-closing safety gate with installation bolt, using ordinary nut fixed, and then use the locking nut fixed (configuration by the installation of the M8 wrench, 2 to 10% configuration) 使用安装螺栓把锯齿形安装块和自闭式安全门的固定块连接在一起, 先使用普通型螺帽固定, 再使用锁紧螺帽固定, 再套上橡胶保护帽 (配置由 2 把 M8 的安装扳手, 配置比例为 10%)
- Adjust the width of self-closing safety gate by M10 internal hexagonal wrench 使用 M10 的内六角扳手调节自闭式安全门的宽度
- Installation complete 安装完毕

Remark 备注

对于 UL 系列自闭式安全门的宽度是无级调节的, 需要客户在现场根据安装位置的具体尺寸进行切割的





STG meets ISO9001 Certificate

STG Self Closing Safety Gate Equipment meets CE Certificate Three pieces Patent certificate

9. Operating Instructions 使用说明:

9.1. Open the self-closed safety gate, and rise from the closed safety door, when Personnel enter the working site 人员进入现场，打开自闭式安全门，自闭式安全门上升

9.2. self-closed safety gate is closed self-motion when released 离开的时候，自闭式安全门自动关闭

Remark 备注

- For the self-closed safety door in the use of the phenomenon of paint, paint should be timely, to avoid corrosion in the field pipeline 对于自闭式安全门在使用过程中出现掉漆的现象，应该及时补漆，避免管道在现场被腐蚀
- Between the rotating shaft and the casing of the self-closing safety door, add a little oil for about 90 days to make it run more smoothly 对于自闭式安全门的转动轴和套管之间，大约 90 天时间加一点油，使其转动更加流畅
- The sequence of using the self-closed safety gate: the self-closed safety gate must be completely closed after the first person walks away, and the second person can open the self-closed safety gate again. Multiple people are not allowed to go through the self-closed safety gate together 使用自闭式安全门的顺序：必须等待前面一个人走开之后，自闭式安全门完全关闭，后面一个人才可以再次打开自闭式安全门，不允许多人一起通过自闭式安全门

10. Product Picture 产品图片 (FYI)





STG meets ISO9001 Certificate

STG Self Closing Safety Gate Equipment meets CE Certificate Three pieces Patent certificate

11. Installation Picture 现场安装照片





STG meets ISO9001 Certificate
STG Self Closing Safety Gate Equipment meets CE Certificate Three pieces Patent certificate

12. The size of SCSG B-P series B-P 系列自闭式安全门产品尺寸



The size of SCSG B-P-L

B-P-L 系列自闭式安全门产品尺寸

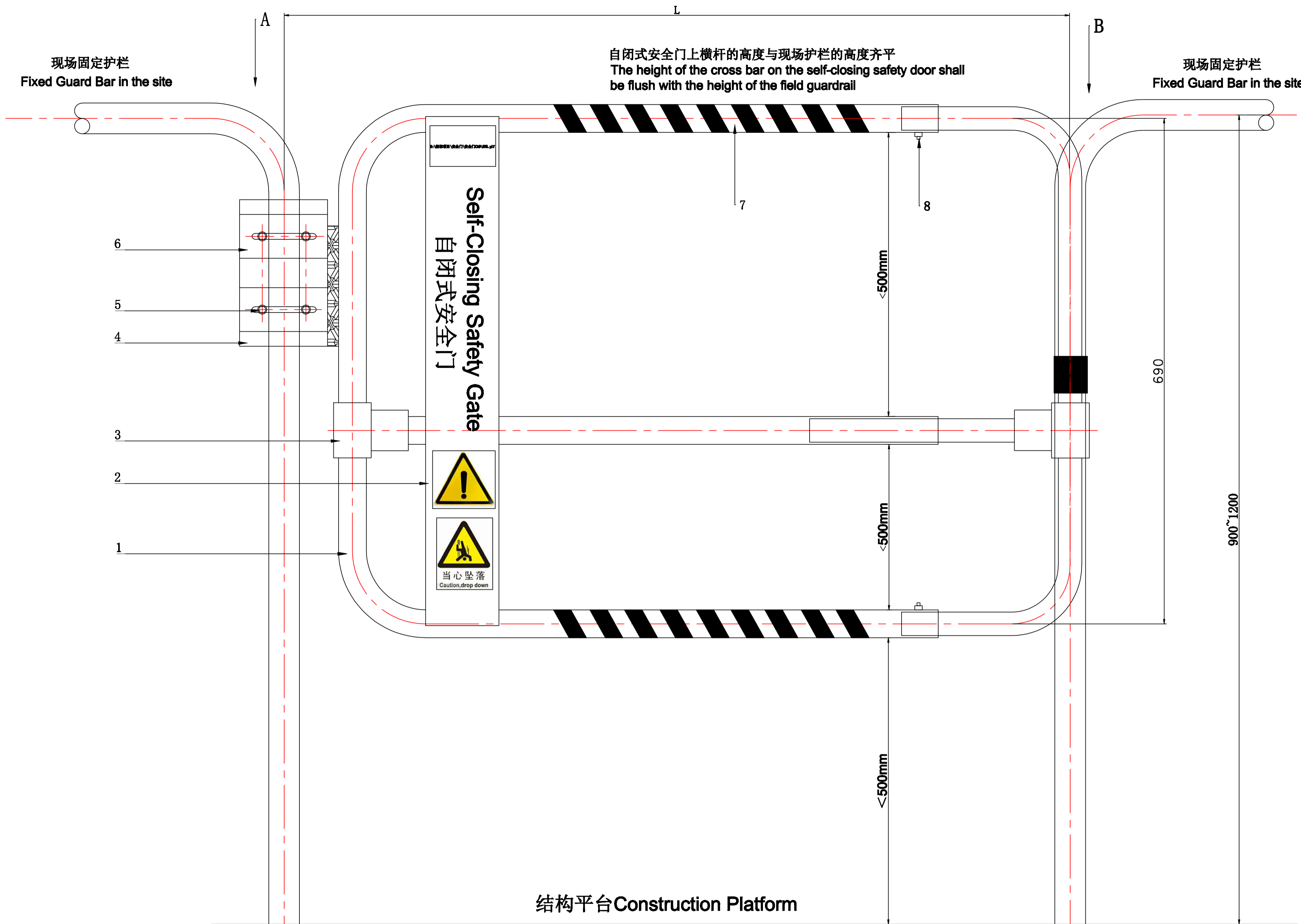
1. 宽度尺寸是有限调节的
2. 自闭式安全门与安装柱的平行
3. 高度：728mm
4. 安装分左右



STG meets ISO9001 Certificate
STG Self Closing Safety Gate Equipment meets CE Certificate Three pieces Patent certificate

Manufacturer 制造商	Description 描述	Fits Size 适用尺寸 (Inches/mm)	Estimate Weight 估算重量 (Lbs/KG)	Type 型号	
				Stainless steel 不锈钢 SS304	Carbon steel 碳钢
STG	17" Self closing safety gate	17" to 21"	21.12 lbs.	B-P-L-SS-CT-17-L/R-T/0	B-P-L-CS-CT-17-L/R-T/0
	17" 自闭式安全门	432~533 mm	9.58KG		
STG	20" Self closing safety gate	20" to 24"	21.32 lbs.	B-P-L-SS-CT-20-L/R-T/0	B-P-L-CS-CT-20-L/R-T/0
	20" 自闭式安全门	508~609 mm	9.82 KG		
STG	23" Self closing safety gate	23" to 27"	21.64 lbs.	B-P-L-SS-CT-23-L/R-T/0	B-P-L-CS-CT-23-L/R-T/0
	23" 自闭式安全门	584~685 mm	10.06 KG		
STG	26" Self closing safety gate	26" to 30"	22.7 lbs.	B-P-L-SS-CT-26-L/R-T/0	B-P-L-CS-CT-26-L/R-T/0
	26" 自闭式安全门	660~762 mm	10.3KG		
STG	29" Self closing safety gate	29" to 33"	23.23 lbs.	B-P-L-SS-CT-29-L/R-T/0	B-P-L-CS-CT-29-L/R-T/0
	29" 自闭式安全门	736~838 mm	10.54KG		
STG	32" Self closing safety gate	32" to 36"	23.76 lbs.	B-P-L-SS-CT-32-L/R-T/0	B-P-L-CS-CT-32-L/R-T/0
	32" 自闭式安全门	812~914 mm	10.78 KG		
STG	35" Self closing safety gate	35" to 39"	24.29 lbs.	B-P-L-SS-CT-35-L/R-T/0	B-P-L-CS-CT-35-L/R-T/0
	35" 自闭式安全门	889~990 mm	11.02 KG		
STG	38" Self closing safety gate	38" to 42"	24.82 lbs.	B-P-L-SS-CT-38-L/R-T/0	B-P-L-CS-CT-38-L/R-T/0
	38" 自闭式安全门	965~1066 mm	11.26 KG		

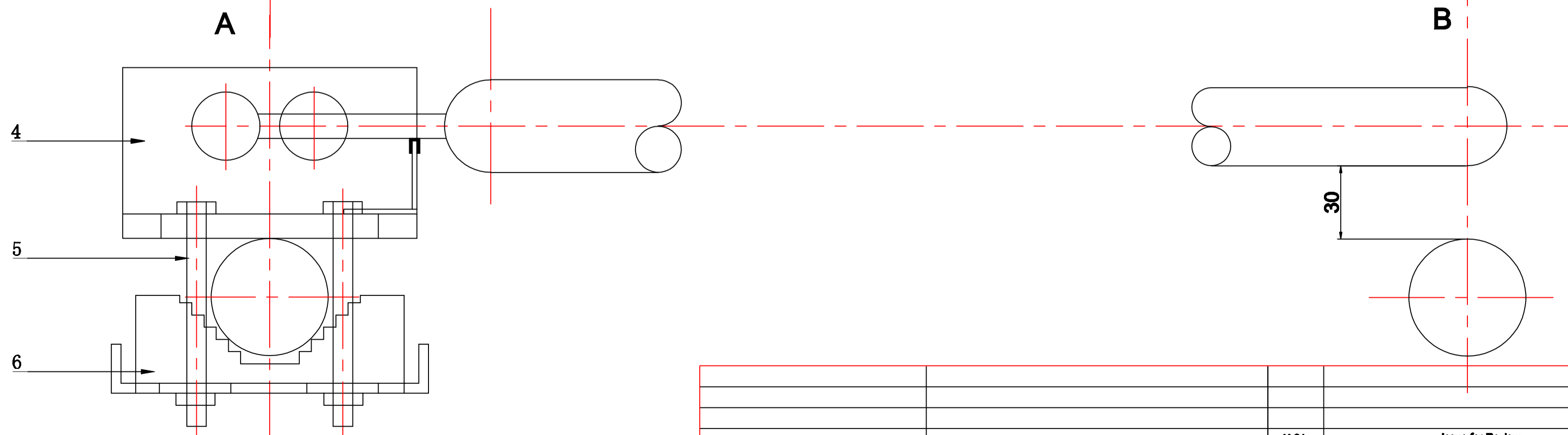
The Drawing for the unit 产品图纸




- 备注 Notes**
1. B-P-L Series Carbon steel Self-closing safety gate (Installed in the parallel of the guardrail column)
 2. 设备名称: B-P-L系列碳钢自闭式安全门 (与安装立柱平行, 宽度有限调节)
 3. Products number: B-P-L-CS-CT-XX-L/R-T/0
 4. 产品编号: B-P-L-CS-CT-XX-L/R-T/0
 5. Tag No.位号: SCSG-1001~
 6. Total数量: Sets

规格与尺寸 Specification and Size

Item 序号	Product No. 产品编号:	Width Size : L 宽度尺寸 (mm/Inch.)	Adjusted Size 可调节尺寸 宽度W1 (mm/Inch.)	Weight of unit 设备重量 (KG)
1	B-P-L-CS-CT-17-L-0	432~533 mm 17" to 21"	100/4	10.77
2	B-P-L-CS-CT-20-L-0	508~609 mm 20" to 24"	100/4	11.05
3	B-P-L-CS-CT-23-L-0	584~685 mm 23" to 27"	100/4	11.33
4	B-P-L-CS-CT-26-L-0	660~762 mm 26" to 30"	100/4	11.61
5	B-P-L-CS-CT-29-L-0	736~838 mm 29" to 33"	100/4	11.89
6	B-P-L-CS-CT-32-L-0	812~914 mm 32" to 36"	100/4	12.17
7	B-P-L-CS-CT-35-L-0	889~990 mm 35" to 39"	100/4	12.45
8	B-P-L-CS-CT-38-L-0	965~1066 mm 38" to 42"	100/4	12.73



NO.	CODE	ITEM	SPEC	QTY.	MAT'L	REMARK
9						
8	RGS	调节螺丝 Regulating Screw		2	SS304	
7	SAT	警示带 Safety Tape		1	不干胶	
6	CTP	锯齿块 Catch Parts		2	CS	Spraying ABS
5	INTB	安装螺栓 Installation Bolt		4	Galvanize	
4	BASE	固定块 Base		1	CS	Spraying ABS
3	ADJB	横杆调节座 Adjust Base		2	LV	Spraying ABS
2	SMK	安全标识 Safety Mark		1	不干胶	
1	MAF	主体框架 Main Frame	$\varnothing 38^*2-\varnothing 32^*2$	2	CS	Spraying ABS



盐城市斯壮格安全设备有限公司
YANCHENG STG SAFETY EQUIPMENT CO.,LTD

Carbon Steel Self-closing Safety Gate
碳钢自闭式安全门

FABRICATION/ CONSTRUCTION DETAIL DRAWINGS
装配/ 结构详图

图号: 0000-0000-MEF-DTL-0000-STG-00001-00	日期: 12-Jan-20						
-----------------------------------------	---------------	--	--	--	--	--	--

图号: DRAWING NO.	图名: DRAWING TITLE	版次: REV.	描述: DESCRIPTION	日期: DATE	设计: DESIGNED	校对: CHECKED	审核: REVIEWED	审定: APPROVED
		K-01	Issue for Review	12-Jan-20	Mr.Tiger.Liu	Ms.Jingqi	Ms.Yeqin	Mr.Jack.Chen
参考图纸 REFERENCE DRAWINGS								



STG meets ISO9001 Certificate
STG Self Closing Safety Gate Equipment meets CE Certificate Three pieces Patent certificate



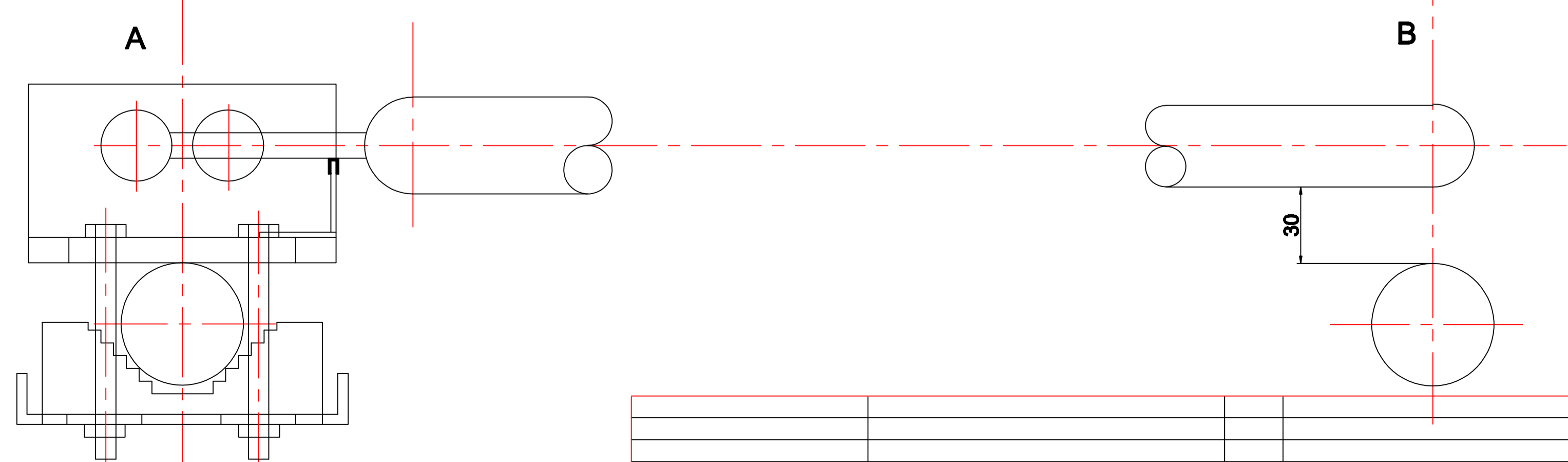
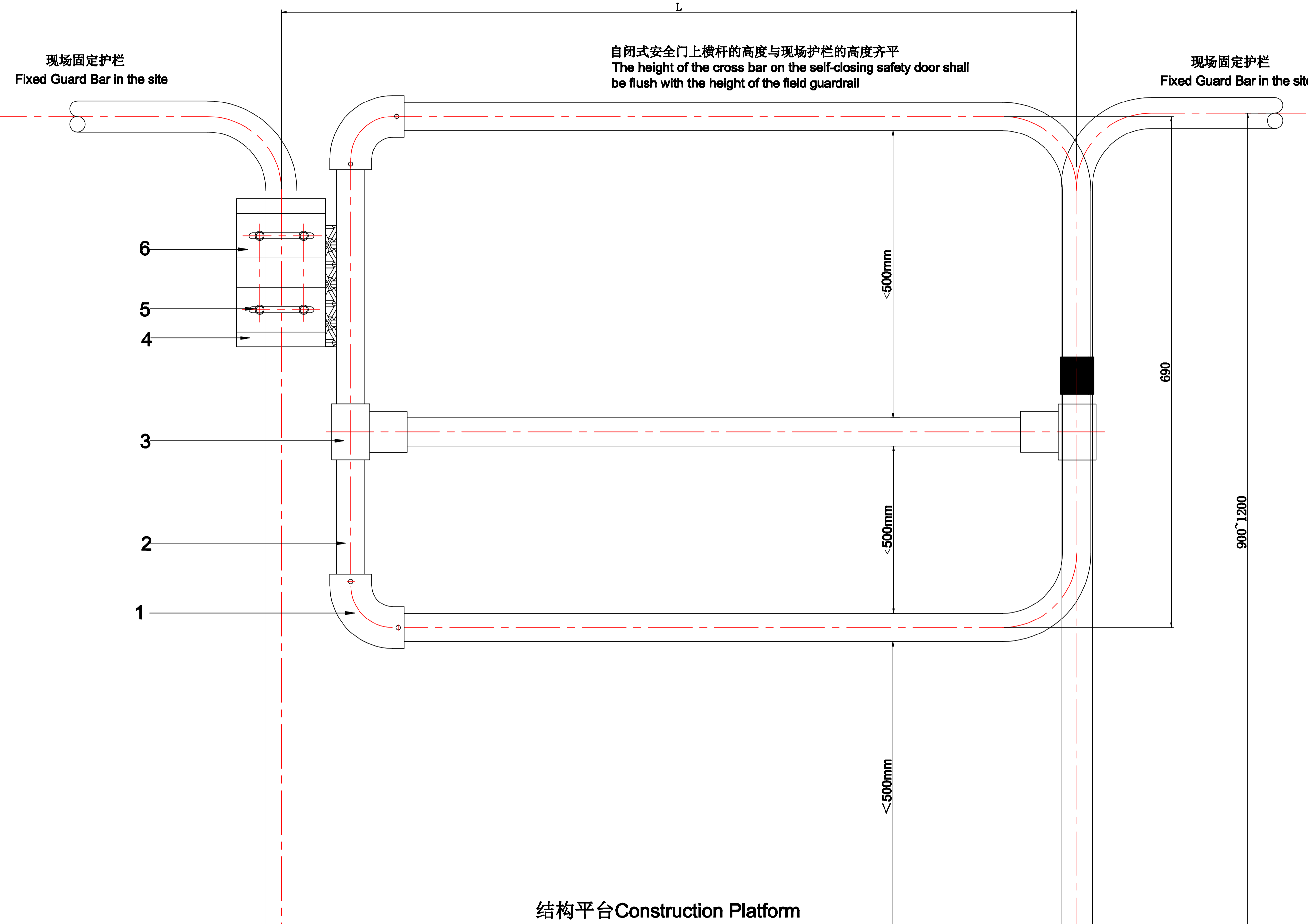
The size of SCSG B-P-UL

B-P-UL 系列自闭式安全门产品尺寸

1. 宽度尺寸是无级调节的
2. 自闭式安全门与安装柱的平行
3. 高度：722mm
4. 安装分左右

Manufacturer 制造商	Description 描述	Fits Size 适用尺寸 (Inches/mm)	Estimate Weight 估算重量 (Lbs/KG)	Type 型号	
				Stainless steel 不锈钢 SS304	Carbon steel 碳钢
STG	Self closing safety gate 自闭式安全门	17" to 42"	24.82 lbs.	B-P-UL-SS-CT-00-L/R-T/0	B-P-UL-CS-CT-00-L/R-T/0
		432~1066 mm	11.26KG		
		965~1066 mm	11.26 KG		

The Drawing for the unit 产品图纸



备注Notes

- B-P-UL Series Carbon steel Self-closing safety gate (Installed in the parallel of the guardrail column)
- 设备名称: B-P-UL系列碳钢自闭式安全门 (与安装立柱平行, 宽度无级调节)
- Products number: B-P-UL-CS-CT-00-L/R-T/0
- 产品编号: B-P-UL-CS-CT-00-L/R-T/0
- Tag No.位号: SCSG-1001~
- Total数量: Sets

规格与尺寸
Specification and Size

Item 序号	Product No. 产品编号:	Width Size :L 宽度尺寸 (mm/Inch.)	Adjusted Size 可调节尺寸 宽度W1 (mm/Inch.)	Weight of unit 设备重量 (KG)
1	B-P-UL-CS-CT-00-L/R-T/0	432~1066 mm 17" to 42"	634	12.73

NO.	CODE	ITEM	SPEC	QTY.	MAT'L	REMARK
9						
8						
7						
6	CTP	锯齿块 Catch Parts		2	CS	Spraying ABS
5	INTB	安装螺栓 Installation Bolt		4	Galvanize	
4	BASE	固定块 Base		1	CS	Spraying ABS
3	ADJB	横杆调节座 Adjust Base		2	LV	Spraying ABS
2	MAF	主体框架 Main Frame	Ø32*2	1	CS	Spraying ABS
1	FEB	固定弯头 Fix Elbow	DN25	2	SS304	

盐城市斯壮格安全设备有限公司
YANCHENG STG SAFETY EQUIPMENT CO.,LTD

Carbon Steel Self-closing Safety Gate
碳钢自闭式安全门

FABRICATION/ CONSTRUCTION DETAIL DRAWINGS
装配/结构详图

图号: 0000-0000-MEF-DTL-0000-STG-00001-00	图名: Carbon Steel Self-closing Safety Gate	日期: 12-Jan-20	比例: 1:1	图例: 12-Jan-20
-----------------------------------------	-------------------------------------------	---------------	---------	---------------

图号	图名	日期	设计	校对	审核	审定
K-01	Issue for Review	12-Jan-20	Mr.Tiger.Lu	Ms.Jinqi	Ms.Yeqin	Mr.Jack.Chen
图号	图名	日期	设计	校对	审核	审定
图号	图名	日期	设计	校对	审核	审定



14. Reference Document 参考文件

14.1. ISO_14122-3_2016 Safety of machinery — Permanent means of access to machinery

Part 3: Stairs, stepladders and guard-rails

3 Terms and definitions

3.2.5

Self-closing gate

Pivoting part of the *guard-rail* (3.2) which enables access through the guard-rail

7 Specific requirements applicable to guard-rails

7.1 Guard-rails for platforms, walkways and stair landings

7.1.1 When the height of the possible fall exceeds 500 mm, a guard-rail shall be installed

7.1.3 The minimum height of the guard-rail shall be 1 100 mm. The height of the handrail shall be $\leq 1\ 100$ mm. The handrail shall be parallel to the walking line

7.1.9 Where access through the guard-rail is required, a gate shall be used (see 7.4)

7.4 Gates

7.4.1 Self-closing gate

A self-closing gate shall be used for passage of persons and shall meet the requirements of the adjacent guard-rails.

Divergent to 7.1.6, a toe-plate is not required. Shear and crushing points shall be avoided. The dimensions shall be in accordance with Figure 6.

Gates shall be

a) self-closing,

NOTE Self-closing can be achieved, for example, by spring or gravity force.

b) held in closed position but not locked,

c) designed to open easily onto the platform or floor, and

d) close against a firm stop to prevent users pushing against them and falling through the opening

7 Specific requirements applicable to guard-rails

7.1 Guard-rails for platforms, walkways and stair landings



STG meets ISO9001 Certificate
STG Self Closing Safety Gate Equipment meets CE Certificate Three pieces Patent certificate

7.1.1 When the height of the possible fall exceeds 500 mm, a guard-rail shall be installed

7.1.3 The minimum height of the guard-rail shall be 1 100 mm. The height of the handrail shall be $\leq 1\ 100$ mm. The handrail shall be parallel to the walking line

14.2. ISO_14122-4_2016 Safety of machinery — Permanent means of access to machinery

Part 4: Fixed ladders

5.4.4.2 Self-closing gates

To prevent falling through the access opening at arrival area from an access platform the opening shall be provided with a self-closing gate.

Self-closing gates shall meet the requirements of ISO 14122-3:2016, 7.4.1.

GB 17888.3-2008 机械安全 进入机械的固定设施 第 3 部分：楼梯、阶梯和护栏

本部分是 GB17888 的第 3 部分，本部分为全文强制

3 术语和定义

3.2.5 自关门

便于打开的护栏部件。松开该门时，它会借助重力或者弹簧等自动关闭

7 护栏的安全要求

7.1 水平护栏

7.1.9 在扶手有中断的情况下，为了防止手陷入其中，两段护栏之间的距离宜在 75mm 至 120mm 之间，如有大开口，应采用自关门

7.1.10 需要穿过护栏的地方应使用自关门。自关门应具有与护栏的扶手和横杆同样高度的扶手和横杆

任何自关门应能自关，并且应设计朝向平台内或者地板上打开，且关闭牢固以防止使用者推开而从开口处跌落。自关门应能承受和护栏相同的载荷。

7 护栏的安全要求

7.1 水平护栏

7.1.2 当可能坠落的高度超过 500mm 时，应安装护栏

7.1.3 如果平台与机器或者墙壁之间的间距大于 200mm，或者机器的防护装置不能与护栏等效时，应安装护栏。当平台和相邻的机器结构之间的间距大于 30mm 时，应有踢脚板

7.1.4 护栏的最小高度应为 1100mm

7. 1.5 护栏应至少包括一根中间横杆或者其他等效保护。扶手和横杆及横杆和踢脚板之间的净空不应超过 500mm

7.1.6 当用立杆代替横杆时，各立杆之间的水平间距最大为 180mm

GB 17888.4-2008 机械安全 进入机械的固定设施第 4 部分：固定式直梯



STG meets ISO9001 Certificate

STG Self Closing Safety Gate Equipment meets CE Certificate Three pieces Patent certificate

本部分是 **GB17888** 的第 4 部分，本部分为全文强制

4.7.3.2 门

为了防止由到达面的出口处坠落，该出口应安装门

门应满足下列要求：

- a) 该门的打开方向不应朝向坠落边（向外）
- b) 该门应设计得易于打开
- c) 该门应自动关闭，如借助弹簧或者重力效应

根据 GB17888.3 的有关要求，该门应至少有扶手和横杆

15. 联系信息

盐城市斯壮格安全设备有限公司

YANCHENG STG SAFETY EQUIPMENT CO.,LTD

地址：盐城东台市四灶镇工业园纬一路 1 号

No.1 weiyi road,Sizao town Industrial park Dongtai City.Jiangsu,PRC

Tel: 0515-8549 0208 8549 0218

E-mail: wx@stgmfg.com wxstg@126.com

Website: <http://www.stgmfg.com> www.b1897.com

联系人：刘小林先生 139 5155 4793